

HYDRAULIC SYSTEM'S WATER METERS WITH PULSE EMITTER DEVICE

The Hydraulic System's dry dial water meters can be endowed with a pulse emitter device, reed switch model.

The magnet is set on one of the water meter's reading arrows or numbered rollers.

Different K factors (pulse frequency: 1 pulse every "X" liters) are available according to the model/size

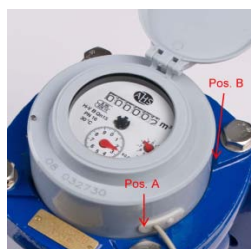
ALFA SDC



**BETA SDC
GAMMA SDC**



**OMEGA - DELTA
COPPER CAN**



KAPPA



<i>Contact type</i>	N.A.	<i>Max Current</i>	0,11 A	<i>Max Frequency</i>	5kHz
<i>Position</i>	Central	<i>Max Contact Resistance</i>	200 mΩ		
<i>Max Power</i>	3 W	<i>Max Contact Capacity</i>	0,2 pF	<i>Min. insulation rupture voltage</i>	200 V
<i>Max Voltage</i>	28 V-DC	<i>Insulation resistance</i>	1010 Ω		

		K=					
Model	Size	1	10	100	1.000	10.000	100.000
BETA MJ SDC	from 1/2" to 2"	X	X	X	X		
GAMMA RP SDC	1/2" - 3/4"	X	X	X	X		
ALFA SJ SDC	1/2" - 3/4"		X				
DELTA SJ SDC	DN 50-65-80-100-125			POS A	POS B		
	DN 150 - 200 - 250 - 300				POS A	POS B	
OMEGA WE SDC	DN 50-65-80-100-125			POS A	POS B		
	DN 150-200				POS A	POS B	
	DN 250-300-400-500					POS A	POS B
KAPPA WE SDC	DN 50-65		POS A	POS B	POS C		
	DN 80 - 100 - 125 - 150			POS A	POS B	POS C	
	DN 200 -250-300				POS A	POS B	POS C