



Omega-We-Sdc

Helix Woltmann type water meter
interchangeable mechanism-dry dial

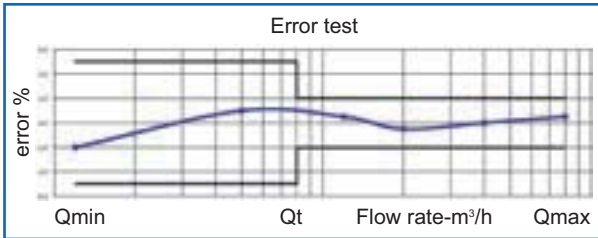
AHS
alpe
HYDRAULIC SYSTEMS

Helix Woltmann type water meter interchangeable mechanism-dry dial

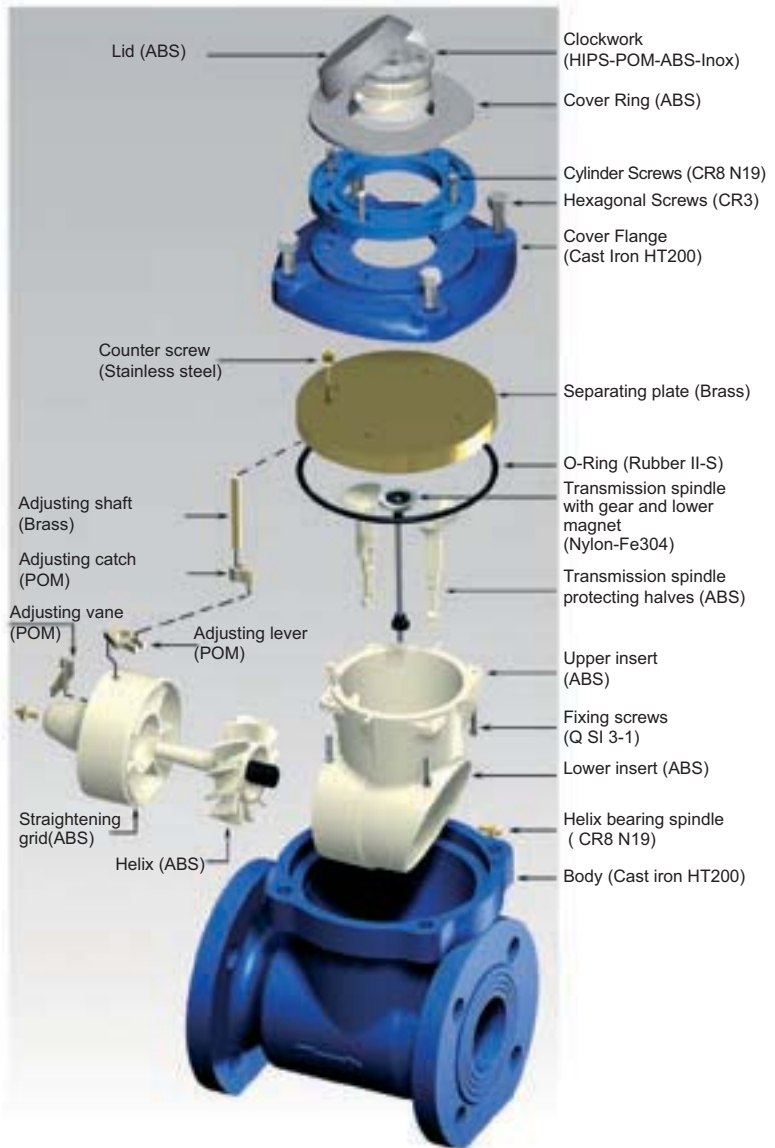
A full bore, helix Woltmann type meter suitable for cold water. The impeller rotates on stainless steel spindles mounted in the measuring chamber. The impeller is made of self-cleaning synthetic resin.

The helix aligns with the pipe axis. The complete metering unit is easily removable from the meter body. The meter is designed to ensure high flow-rate with minimum head-loss. Omega-We-Sdc is a super-dry dial type meter with 360° rotating clockwork. The gears and the totalizer operate in a dry Copper-Can* compartment, only the helix is submerged in water. Transmission is achieved through a corrosion-proof permanent magnetic drive which is protected by the cast iron meter body from external magnetic fields. A version for warm water up 90° C is available. The water meter OMEGA WE SDC in pre-equipped for application of pulse emitter reed switch type.

Approved EEC 75/33 Class B.



* Copper-Can. Clockwork contained in a closed copper box with a mineral glass cover. IP68 tightness and perfect clear reading is guaranteed



TECHNICAL DATA AND DIMENSIONS (Class B)

GAUGE	mm	50	65	80	100	125	150	200	250	300	400	500
	inches	2"	2.1/2"	3"	4"	5"	6"	8"	10"	12"	16"	20"
Qmax	m³/h	30	50	80	120	120	300	500	800	1200	2000	3000
Qn	m³/h	15	25	40	60	60	150	250	400	600	1000	1500
Qt	m³/h	3	5	8	12	12	30	50	80	120	200	300
Qmin	m³/h	0,45	0,75	1,2	1,8	1,8	4,5	7,5	12	18	30	45
PN*	bar	16	16	16	16	16	16	16	16	16	16	16
Pressure loss (at Qmax)	bar	<0,2	<0,2	<0,2	<0,2	<0,2	<0,2	<0,2	<0,2	<0,2	<0,2	<0,2
Minimum reading	lt	1	1	1	1	1	10	10	10	10	10	10
Maximum reading	m³	10 ⁶	10 ⁶	10 ⁶	10 ⁶	10 ⁶	10 ⁷	10 ⁷	10 ⁸	10 ⁸	10 ⁸	10 ⁸
Weight	Kg	11,00	13,00	14,50	17,50	22,00	44,00	53,00	105,00	115,00	190,00	280,00
Length (L)	mm	200	200	225	250	250	300	350	450	500	600	800
Height (H)	mm	235	235	255	265	265	325	352	470	495	640	750
Opening flow	m³/h	0,2	0,3	0,3	0,4	0,4	1,4	1,6	3	9	16	20

* On request PN10-PN25

